



# BELOW IS A BRIEF INTRODUCTION TO MY FAMILY

## THE QUEEN

- ☺ THE ONLY FULLY DEVELOPED FEMALE.
- ☺ A 2 DAY OLD LARVA IS SELECTED BY THE WORKERS TO BECOME THE QUEEN BEE.
- ☺ SHE WILL EMERGE FROM HER CELL TO MATE IN FLIGHT WITH MULTIPLE DRONE BEES.
- ☺ SHE WILL RECEIVE ENOUGH SPERM TO LAST HER ENTIRE LIFE SPAN OF ABOUT 2 YEARS
- ☺ A PRODUCTIVE QUEEN CAN LAY 1,200 EGGS IN A SINGLE DAY

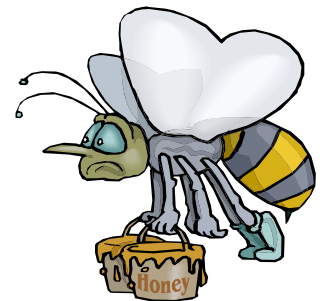
## THE DRONES

- ☺ MALE BEES WHICH HAVE NO STINGERS.
- ☺ DRONES DO NOT COLLECT FOOD OR POLLEN FROM FLOWERS.
- ☺ THEIR ONLY PURPOSE IS TO MATE WITH A QUEEN.
- ☺ IF THE COLONY IS SHORT ON FOOD, DRONES ARE OFTEN KICKED OUT OF THE HIVE.



## THE WORKERS

- ☺ UNDERDEVELOPED FEMALES.
- ☺ SMALLEST BEES IN THE COLONY.
- ☺ A COLONY CAN HAVE 50,000 TO 60,000 WORKERS.
- ☺ HER LIFE EXPECTANCE IS ABOUT ONE MONTH IN THE SUMMER.
- ☺ FEED THE QUEEN, COLLECT THE NECTAR, AND GUARD THE HIVE.
- ☺ KEEP THE HIVE COOL BY FANNING THEIR WINGS.



HEY, DID YOU KNOW...

THAT HONEY BEES FLAP THEIR WINGS 11,400 TIMES PER MINUTE.  
THIS MAKES THEIR DISTINCTIVE BUZZ SOUNDS.